



NOBLESSE BRACELET

Free Beading Tutorial

An original BeadedTreasury Design (© 2018 Iulia Postica. All rights reserved). This pattern is for personal use and small group teaching. It cannot be sold, republished (online and off-line), redistributed, translated without permission, or edited in any way - in part or in whole. Please always credit me as a designer. Thank you!
www.BeadedTreasury.com

TECHNIQUES

Bead weaving

PROJECT LEVEL

Intermediate

MATERIALS (see bellow for Finished Size)

Pink

29 white pink gold luster 6x5mm Preciosa Czech glass Mushroom beads

5 gr. silver lined milky peach size 11/0 Japanese seed beads (Toho 2111) - Color A

1.5 gr. opaque turquoise size 11/0 Japanese seed beads (Toho 55) - Color B

2 silver lined milky teal size 11/0 Japanese seed beads (Toho 2104)

One 8mm silver magnetic clasp

Two 5mm silver jump rings

One G thread, beige

Blue

29 white blue 6x5mm Preciosa Czech glass Mushroom beads

5 gr. silver lined milky pomegranate size 11/0 Japanese seed beads (Toho 2113) - Color A

1.5 gr. permanent finish galvanized aluminum size 11/0 Japanese seed beads (Toho PF558) - Color B

2 dark bronze size 11/0 Japanese seed beads (Toho 222)

One 8mm silver magnetic clasp

Two 5mm silver jump rings

One G thread, red

TOOLS

Size 11 beading needle

Scissors

Flat-nose pliers

FINISHED SIZE

Length - 16.5 cm (6.5 inches)

Width - 2.2 cm (0.9 inches)

INSTRUCTION

1.



Step 1. Beginning of the bracelet.

Cut a comfortable long piece of beading thread and thread the needle. Pick three color A 11/0 seed beads, one Mushroom bead, one color A 11/0, one 8/0, one Color A 11/0 and another Mushroom bead. Slide the beads down the thread leaving a tail of about 10 cm (4 inches).

2.



Take the needle one more time through all picked beads.

3.



Pull the thread ends and tie them together with two square knots.

4.



Step 2.

Take the needle through the next two Color A 11/0 seed beads. Hide the short end into the ring and cut the excess.

5.



Step 3. Making the first unit.

Pick eight Color A 11/0 seed beads and take the needle through the middle 11/0 seed bead from the group of three.

6.



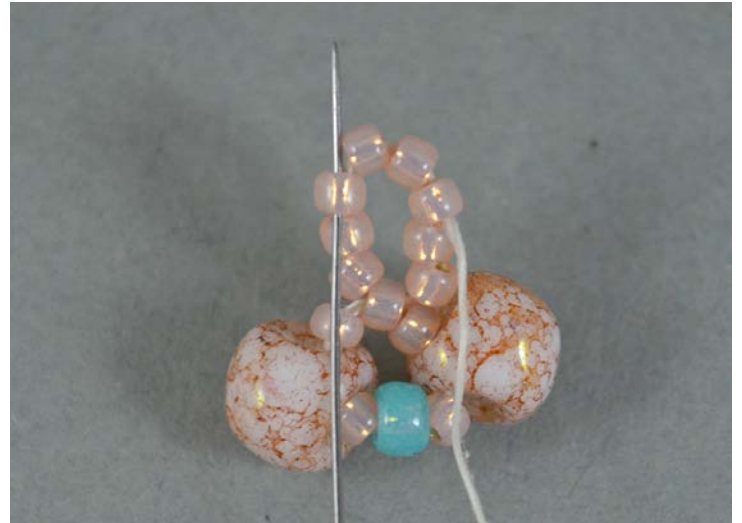
Go with the needle up through the next four Color A 11/0 seed beads.

7.



Continue with the needle down through the next two Color A 11/0 seed beads.

8.



Pass over the next five Color A 11/0 seed beads and take the needle through the next sixth seed bead.

9.



Step 4.

Turn the beadwork on the other side so that the working thread is on the right side. Pick five Color A 11/0 seed beads and go with the needle through the next seed bead.

10.



Pick five Color A 11/0 seed beads and go with the needle through the next seed bead.

11.



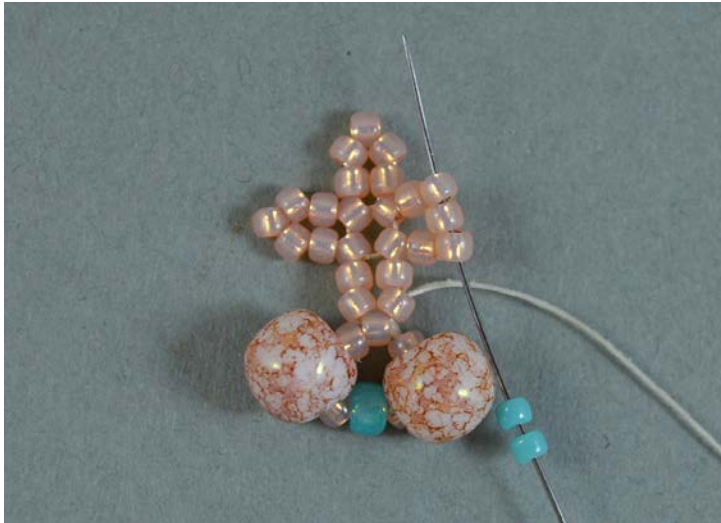
Pick five Color A 11/0 seed beads and go with the needle through the next three seed beads.

12.



Take the needle through the next two Color A 11/0 seed beads.

13.



Step 5.

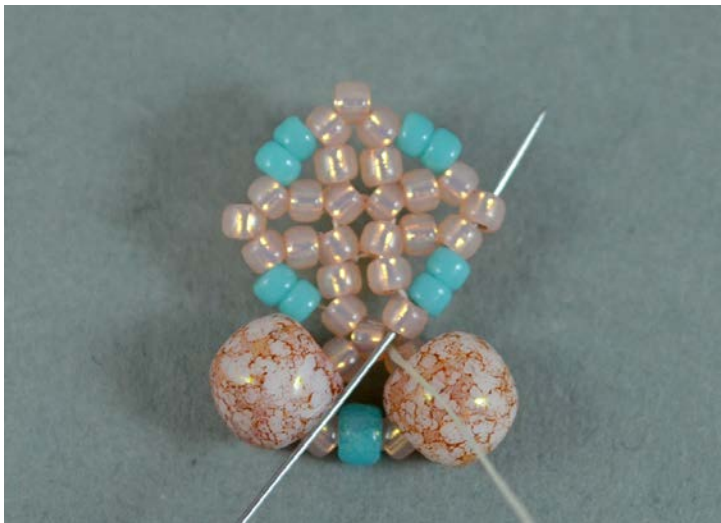
Pick two color B 11/0 seed beads and take the needle through the central three Color A seed beads from the next group of five (added in the previous step).

14.



Repeat adding groups of two color B 11/0 seed beads three more times. In the end, after having picked the last group, take the needle through two Color A 11/0 seed beads as shown in the image above.

15.



Step 6.

Take the needle through the next five 11/0 seed beads.

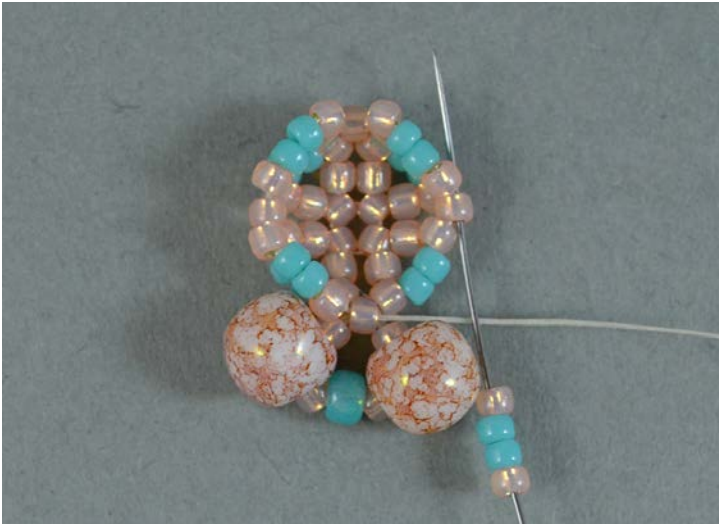
16.



Step 7.

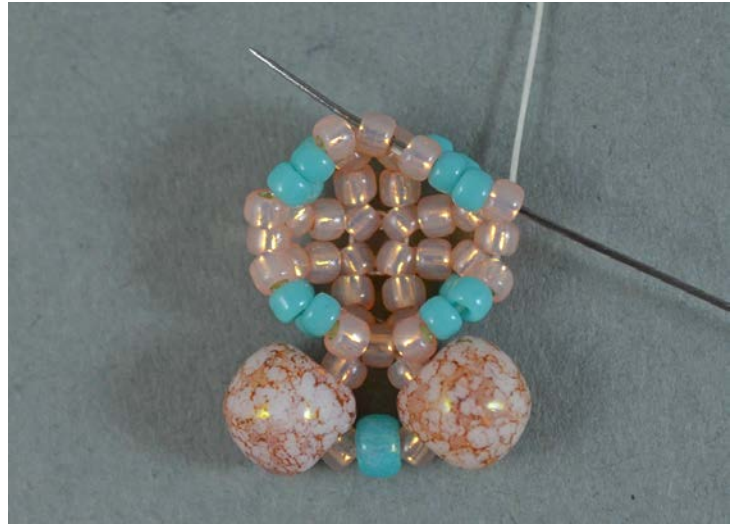
Pick one Color A 11/0, two Color B 11/0s, one color A 11/0 and take the needle through the Color A 11/0 seed bead as shown in the image above.

17.



Repeat adding groups of four seed beads three more times. When you pull the thread the beads will arrange into a circle that doubles the one that lies beneath it.

18.



Step 8.
Take the needle through the next five seed beads.

19.



Step 9.
Pick four Color A 11/0 seed beads and go through two Color A 11/0 seed beads from the opposite side.

20.



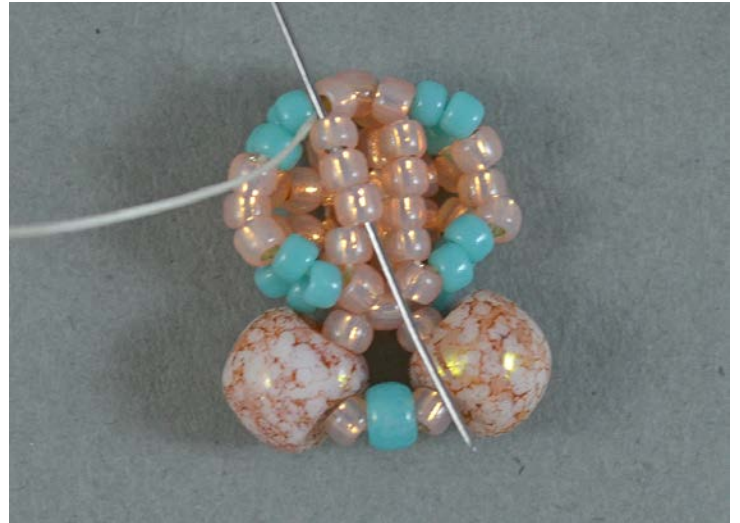
Take the needle through the next Color A 11/0 seed bead.

21.



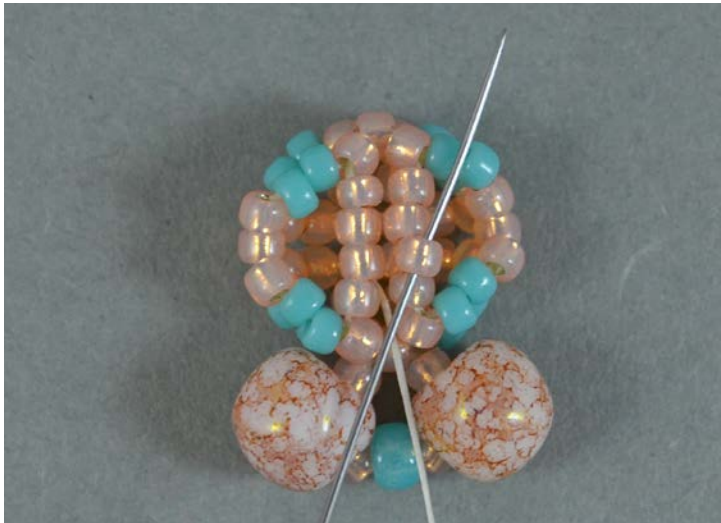
Pick four Color A 11/0 seed beads and go through the three Color A 11/0 seed beads from the opposite side.

22.



Go with the needle through the next three Color A 11/0 seed beads.

23.



Take the needle through the Color A 11/0 seed bead which lies on the right in the parallel row of four seed beads.

24.



Step 10.

Pick one Color A 11/0 seed bead and take the needle through the three Color A 11/0 seed beads which are on the right side.

25.



Pick one Color A 11/0 seed bead and go through the third seed bead from the row of four added in the previous step.

26.



Move the needle to the left through the second Color A 11/0 seed bead from the group of four.

27.



Pick one Color A 11/0 seed bead and take the needle through the three Color A 11/0 seed beads which are on the left side.

28.



Pick one Color A 11/0 seed bead and go through the third seed bead from the row of four added in the previous step.

29.



Step 11.

Take the needle through three Color A 11/00 seed beads to the right edge of the beadwork.

30.



Continue through the next 11/0 seed bead.

31.



Step 12. Making the fringe.

Pick three Color A 11/0 seed beads, one Mushroom bead, three Color A 11/0 seed beads and pass with the needle one more time through the same seed bead the thread exited from.

32.



Strengthen the loop with the Mushroom bead by passing once again through all seven beads with the needle.

33.



Step 13.

Go with the needle through the next five seed beads.

34.



Step 14. Making the connection with the following unit.

Pick one Color A 11/0 seed bead, one Mushroom bead, three Color A 11/0 seed beads, one Mushroom bead, one Color A 11/0 seed bead and take the needle one more time through the same seed bead the thread is exiting from.

35.



Make a full round and a half through the last added beads to strengthen the loop and exit from the middle 11/0 seed bead from the group of three on top of the beadwork.

36.



Step 15. Building up the bracelet.

Turn the beadwork on the other side. Pick eight Color A 11/0 seed beads and continue beading using instructions from **Step 3** through **Step 14**. Repeat eight times or more if needed.

37.



Building up the bracelet.

38.



The beadwork should end with a completed **Step 13**.

39.



Step 16. Ending the bracelet.

Pick one Color A 11/0 seed bead, one Mushroom bead, one Color A 11/0 seed bead, one 8/0 seed bead, one Color A 11/0 seed bead, one Mushroom bead, one Color A 11/0 seed bead and take the needle through the seed bead the thread is exiting from on the bracelet end. Strengthen this loop by passing once again through it with the needle. Hide the thread into the beadwork and cut the excess.

40.



Step 17. Attaching the magnetic clasp.

Use a flat nose pliers to open one jump ring and take it through the 8/0 seed bead from the bracelet end and one half of the magnetic clasp. Do the same on the second bracelet end.